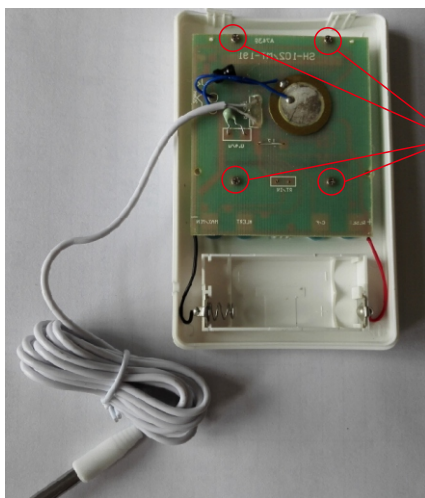
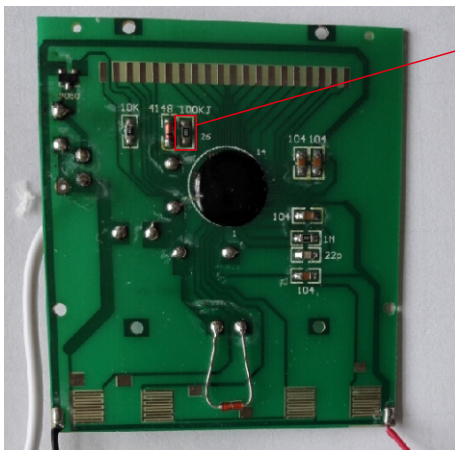
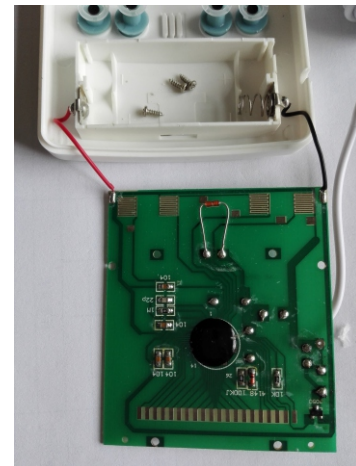


open battery cover,take out screw,remove back cover

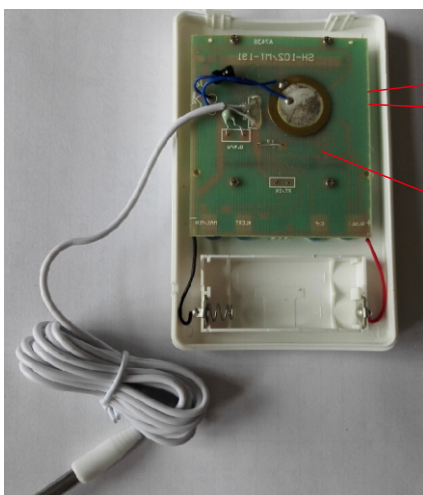
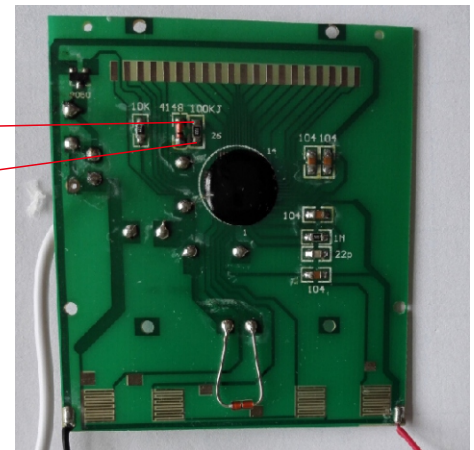


take out screws from PCB



take out the resistor

weld two wires on the pads of resistor, and the end of wires, weld a 120KΩ adjustable resistor.



wire
120KΩ
fix pcb to top cover

*install battery,put the sensor into standard thermostatic tank, check the display temperature and standard temperature,if not right,adjust the resistor still the display to be right.

*after adjust,use multimeter to measure the adjustable resistor,and chose a same value resistor to weld on the pcb.
*assamble the product.